

CERTIFICATE OF LOCATION OF GOVERNMENT CORNER

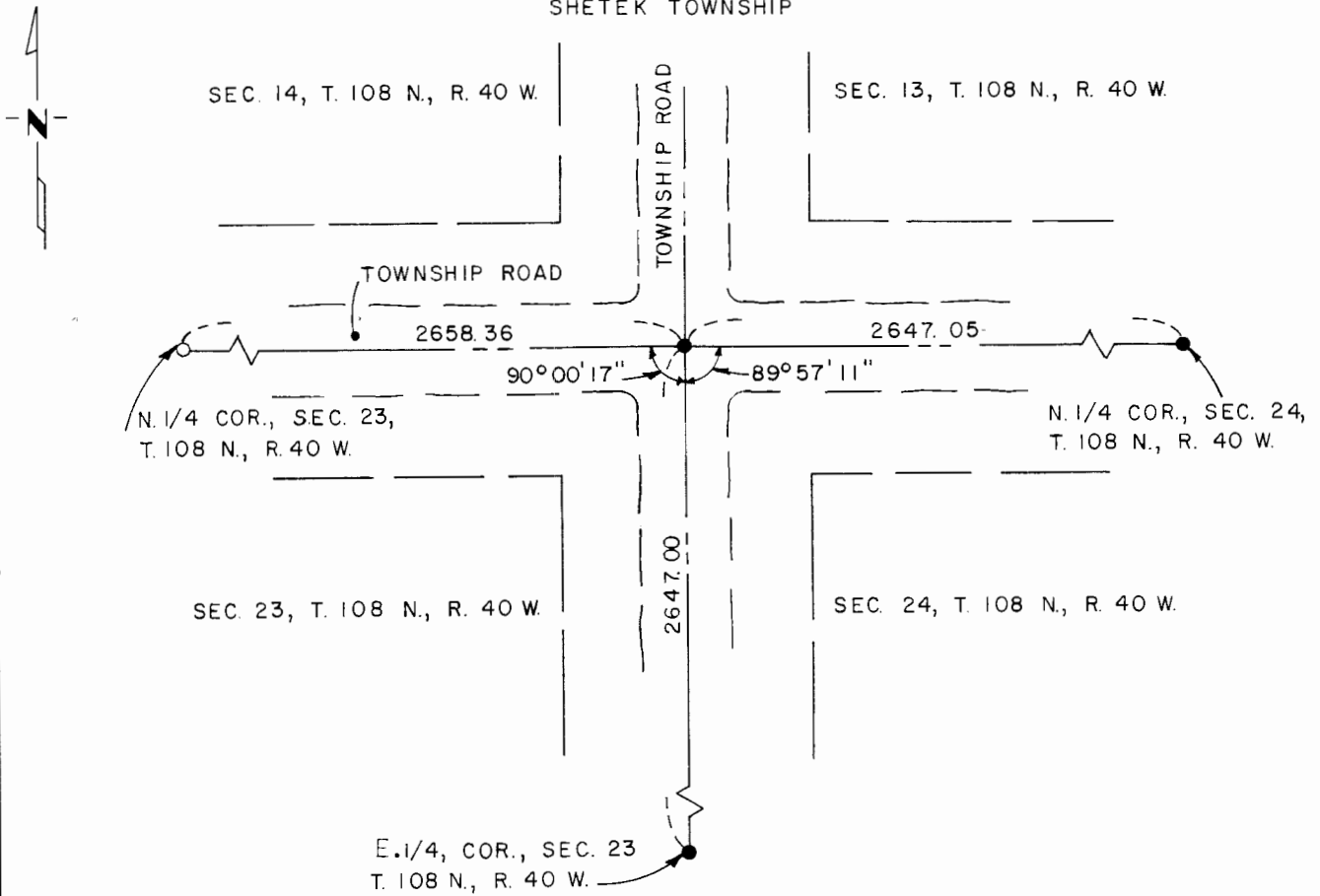
Northeast Corner of Section 23, Township 108 N., Range 40 W., 5th P.M.

STATE OF MINNESOTA, County of Murray

At the corner location shown on the sketch:

- On Sept. 4, 1980 found an old engine valve with hub 1.0' below existing grade;
DATE
valve is on the centerline intersection of both roads. Per Co. Hwy. Dep. records.
 - left monument as found, lowered monument, removed monument (explain)
- On _____ placed a _____
DATE

SKETCH OF REFERENCE TIES
SHETEK TOWNSHIP



I hereby certify that this document and the data contained herein was prepared by me or under my direct supervision.

SIGNATURE DATE

Registration No. 12967

Land Surveyor, Professional Engineer

County Surveyor, County Engineer

OFFICE OF THE COUNTY RECORDER
 County of Murray

I hereby certify that this document was filed in the Co. Recorders office at 10 A.M. on the 18th day of February A.D., 19 82

County Recorder Willard W. Orme

By _____, Deputy

DOCUMENT NO. _____